

Hermetically Sealing Sliding Door / Swing Door

The WTK Hermetically Sliding Door product line has been developed to fulfil the strictest present and future requirements. WTK hermetically sealing doors are widely used in:

1. Laboratories
2. Operating theatres
3. Clean rooms and factories making hi-tech & pharmaceutical products.

The design stands for rounded shapes in all details, which not only looks good but gives improved hygiene control at the same time.

The doors are available in various constructions with or without automatic closing device.

A high quality, reliable hermetically sealing door with many smart options:

- | | |
|-------------------------|--------------------|
| 1. Low weight | 4. Safety features |
| 2. Special profiles | 5. OT lights |
| 3. Hermetically sealing | 6. X-ray viewer |



Automatic Swing Door

Description

The sliding door uses Intelligence Door Tech., an intelligent control system based on more than 15 years of development experience and FLT.

This system guarantees perfect door operation by continuously monitoring its own movements.

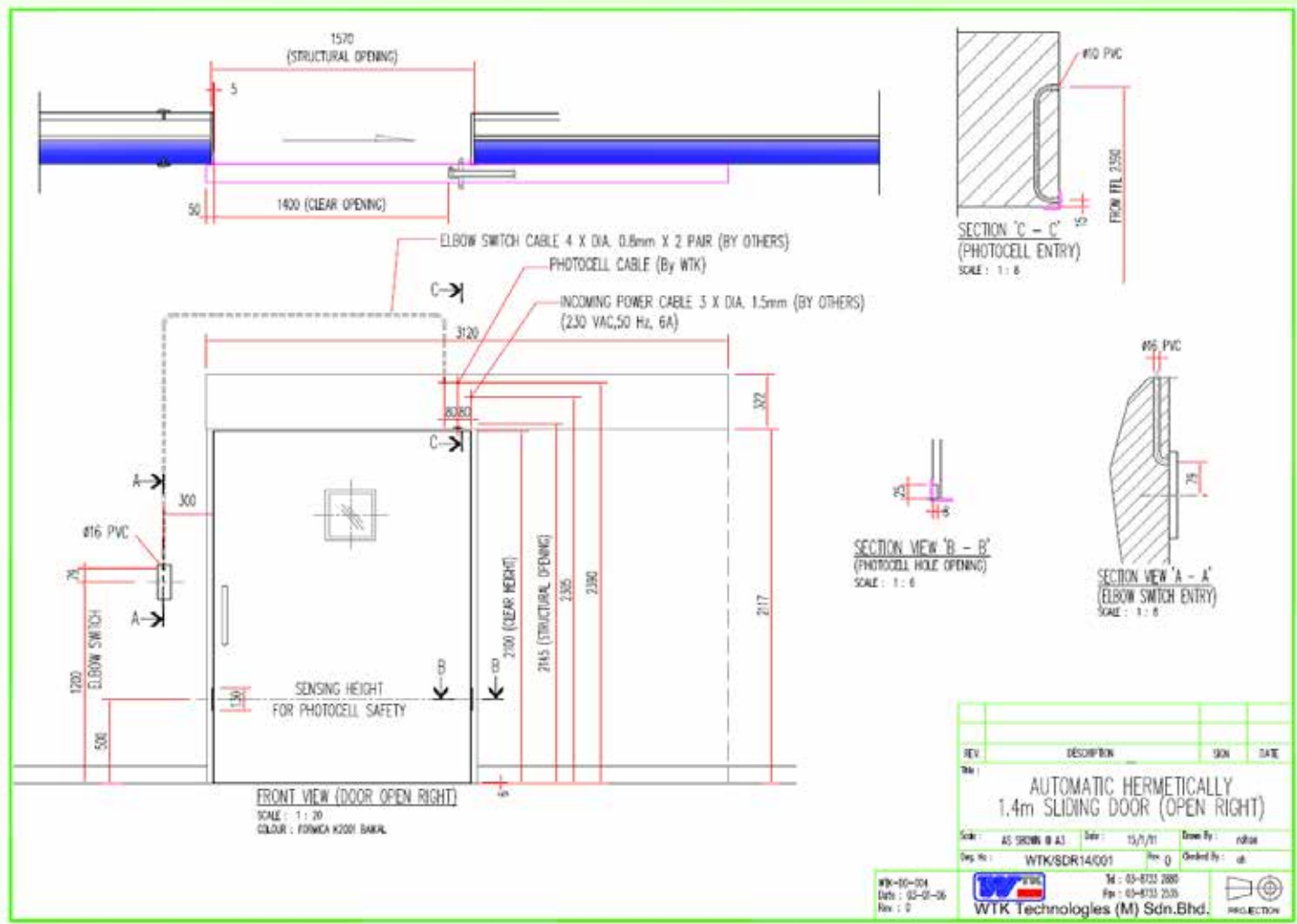
Optional features:
Automatic closing, elbow switch, push button, foot switch, radar, pull switch etc.



Various Color Schemes

Innovative Design in Medical Engineering

TYPICAL LAYOUT OF HERMETICALLY SLIDING DOOR



TECHNICAL SPECIFICATION

HTM 03-01/HTM2025 - Ventilation in Healthcare Premises
 DIN 4799 - Testing of Air Distribution Systems Serving OT
 HTM 2007 - Electrical Supply and Services Distribution
 HTM 2020/2021 - Electrical Safety codes for High & Low Voltage
 EC-Conformity Declaration CE

Designation : WT09000 Hermetically Sliding Door
 Panel : Panel with HPL
 Window : Window with laminated isolation glass / lead glass
 Door profile : Native anodised aluminium profiles around the door
 Thickness : Panel 39.6 mm; including frame 62 mm
 Handle : Special door handle for easy opening in one move
 Sealing : Synthetic sealing to secure optimum sealing
 Bottom guide : Bottom guide to support the door and hermetically sealing
 Power Rating : 240VAC input, 50/60 Hz

MODEL NUMBER

	Hermetically Sliding Door (unless otherwise stated)		
WT09001	Automatic operation 2100 H x 1800mm W & above	WT09009	Viewing Window, various options
WT09002	Manual operation 2100 H x 1800mm W & above	WT09010	Push buttons (elbow switch)
WT09003	Automatic operation 2100 H x 1500mm W - 1799mm W	WT09011	Big Push buttons
WT09004	Manual operation 2100 H x 1500mm W - 1799mm W	WT09012	Radar Switch (Sensor Switch)
WT09005	Automatic operation 2100 H x 1000mm W - 1499mm W	WT09013	Lockset with Eurocylinder
WT09006	Manual operation 2100 H x 1000mm W - 1499mm W	WT09014	Foot Switch
WT09007	Automatic operation 2100 H x <1000mm W	WT09015	Lead Lined
WT09008	Manual operation 2100 H x <1000mm W	WT09021	Double Swing Door various sizes, automatic or manual
		WT09022	Single Swing Door various sizes, automatic or manual

